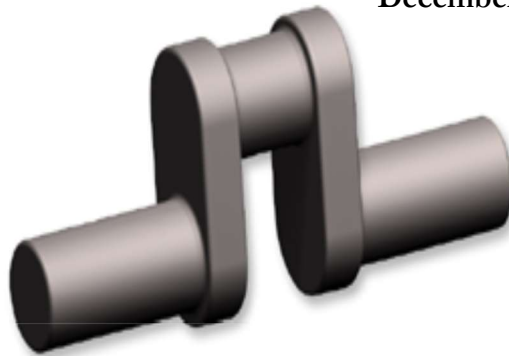


The Crank Calls



President	Paul Denham	pedenham@comcast.net
Secretary	Your name here!	Please consider volunteering
Treasurer	Deirdre Denham	pedenham@comcast.net
Events Coordinator	Steve Hazelton	steve.hzltn@gmail.com
Webmaster	Mike Byrne	mgbyrne3@comcast.net
Editor/Printer	Wes Wagon	weswag@ix.netcom.com

MEMBERSHIP \$25.00 US
Contact Paul Denham at
pedenham@comcast.net

NEXT MEETING
Saturday, January 15, 2022, at the
Golden Gate Live Steamers clubhouse in
Tilden Park, Orinda, CA
Gate opens at 9:00 am
Meeting starts at 10:00 am
Note that December meeting/Holiday Potluck
HAS BEEN CANCELED.

Upcoming Events

- ~~Dec 11: BAEM meeting/potluck at GGLS~~
- Jan 15: BAEM meeting at GGLS
- Feb 19: BAEM meeting at GGLS

See below for more details regarding events. Watch Crank Calls, BAEM emails and BAEM web page for updates. BAEM meetings are usually 3rd Saturday of the month except December.

MEETING NOTES

November 20, 2021
BAEM met inside at Golden Gate Live Steamers clubhouse in Tilden Park on November 20, 2021. There were 15 members in attendance. See notes below regarding engines shown and discussed.

December MEETING CANCELED!

Our December meeting/annual Holiday Potluck has been cancelled, due to a scheduling conflict with GGLS. (After all, it is their meeting space, which they generously permit us to use.) Next meeting in January. See you next year!

NEW MEMBERS/VISITORS

BAEM members are reminded that visitors are welcome at our club meetings, and we're always looking for new members.

TREASURER'S REPORT

BAEM president Paul Denham reported the club is financially solvent.

The 2022 dues of \$25 are due beginning of the year. The time to pay is now! Give your check to Paul Denham, or mail to Deirdre Denham at 1937 Merchant St, Crockett, CA 94525. Make checks payable to "BAEM".

CLUB BADGES

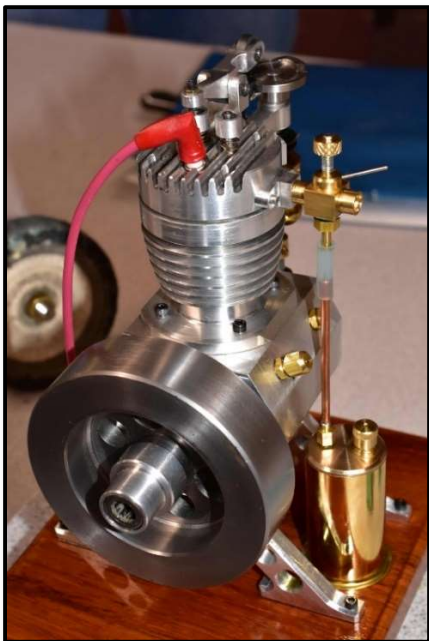
If you are a member in need a badge, contact Mike Rehms (mrehms@byvideo.com) who has offered to produce them.

UPCOMING SHOWS/EVENTS:

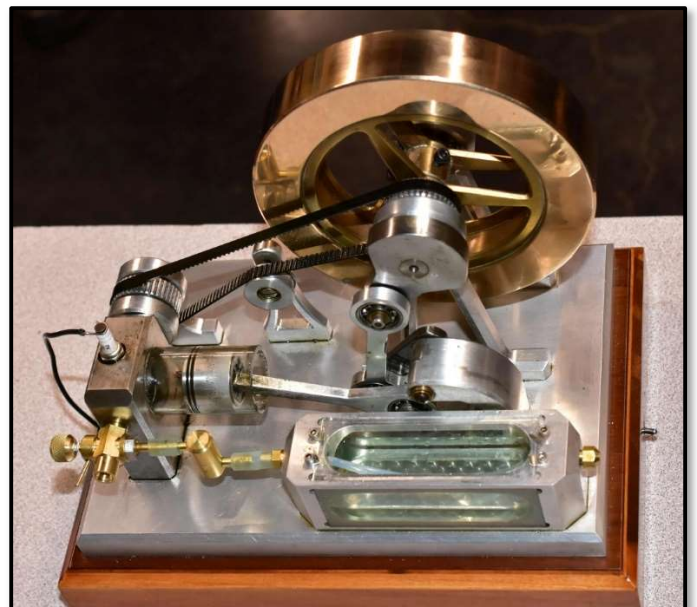
None in the near future.

FIRST POPS

Paul Denham brought two engines. He ran his recently completed version of Bob Shore's Silver Angel. Paul scaled up Bob's design by 1/3 and has the hit and miss fly ball governor nicely tuned.



Paul also ran his Jan Ridders Atkinson engine with a glass cylinder and rotary valve. The Ridders design (http://www.ridders.nu/Webpaginas/pagina_atkinson_mk3/atkinson_mk3_frameset.htm) utilized a vapor carburetor, which was very temperature sensitive, making the engine difficult to run. He recently replaced the vapor carburetor with a GEM design. This carburetor was chosen as an "introduction to machining" project for a young acquaintance. The engine remains somewhat temperamental to run but it is very impressive to watch the fuel ignite in the glass cylinder.



The Jan Ridders Atkinson engine constructed by Paul Denham.

BITS AND PIECES

Ray Fontaine shared a "thank you" note for his participation in the EDGE Branch 13 McFarland Show. Our club's participation was much appreciated, and Ray reported that he had an enjoyable time. Ray urges the club to consider greater involvement in future shows by this group.



Charlie Reiter's mystery turbine

Charlie Reiter brought what appeared to be an air drive turbine that generated some speculative discussion regarding its application. One suggestion was to run some sort of electrical generator. Charlie noted that searching EBay often yielded information regarding mystery components. Charlie also showed a small lab jack that had a shop made ¼ inch drive added to operate with a small driver.

Peter Lawrence brought his V-12 Merlin project mounted on a motor mount with firewall. His current goal is to install only “completed” components. With crank, pistons, valves and a flow through oil system now completed, he was able to start the break-in process, driving the crankshaft with his lathe.



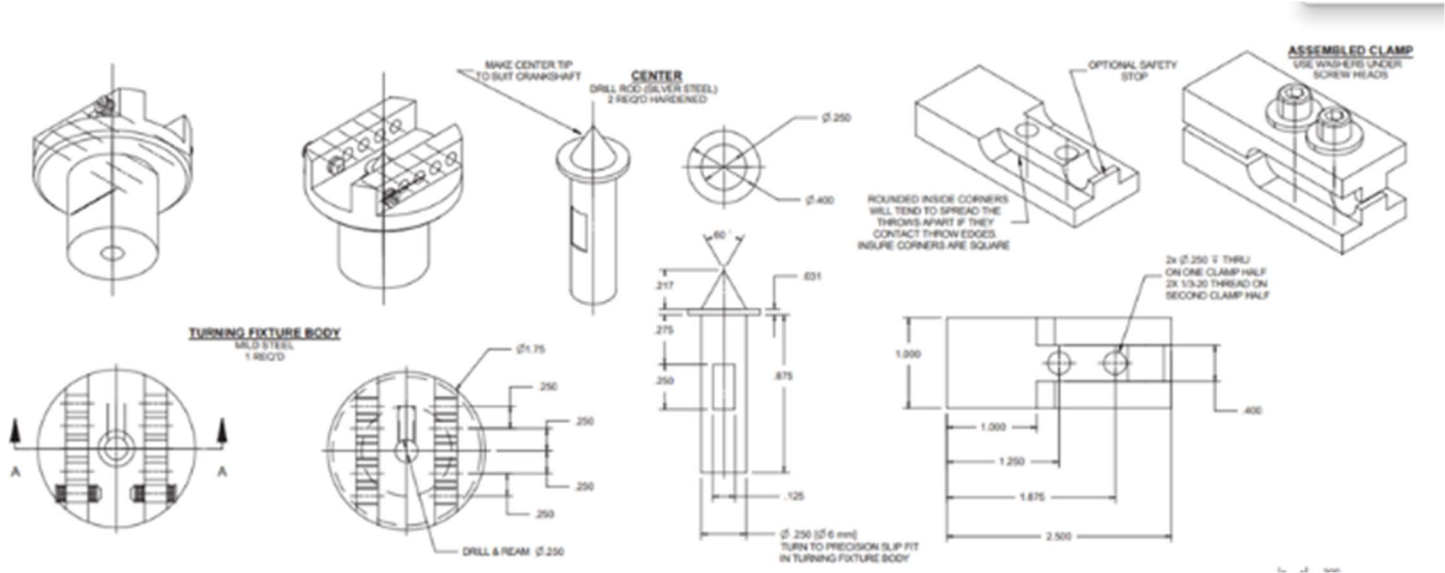
Peter Lawrence's Merlin V-12

Peter also showed his De Havilland Cirrus aircraft engine crankshaft in a lathe turning fixture. Peter uses a drive plate/lathe dog and a variety of clamps to control workpiece flexing and improve balance to reduce vibration.



Peter Lawrence's crankshaft lathe turning fixture.

Dwight Giles suggested an alternative crankshaft drive fixture (see drawing below, from Model Engine Builder issue 6, page 9); Peter was not convinced.



Mike Rehmus and Dwight are collaborating on an air-cooled vertical version of the GEM hit and miss engine. Mike showed some part for this work in progress.



GEM hit and miss engine

Paul Denham's wife Dee convinced the Step Models manufacturer to send Paul a Frisco Standard casting kit. It is a companion of the Red Devil model that Paul recently completed. Dee had to be persuasive because the kits are no longer in production. Paul's kit arrived minus one of the cast aluminum bearing caps. Mike Rehmus drafted up a solid model in Alibre and printed the part using his UV resin 3-D printer. Dwight offered to apply some epoxy paint to improve surface finish and provide UV protection.



3-D printed part

RAMBLINGS

Working on an interesting project? Got a great BAEM story? Share it with us here. Send us pics and project details, and your hard work will be shared with the entire club.

WANTED

BAEM member Larry Bunch wants to purchase a Logan 11 x 36 Lathe and asks that anyone who knows of one for sale please contact him.

Larry Bunch
209-404-6700
wendyroky2@gmail.com

FOR SALE

Jerry Franklin has a Taiwan Bridgeport clone for sale. It's a 1980 EXACTO model 942b milling machine with 9x42" table, 220/440 3 phase power. Better than average condition. Located in Milpitas. \$2200. Leave contact info at 408 263 8577 (voicemail) and Jerry will get in touch with you.



--+--

Mike Phelan has a mill for sale. Rong-Fu RF31 Mill Drill & stand (made in Taiwan) with DRO on X-Y axis plus quill mount for dial indicator on Z axis. Has power down feed and table feed. Includes swivel vice with degree scale, a sine vice, and a rotary table w/ 3 jaw vice. Other accessories include 3 drill chucks, parallels, adjustable parallels, fractional R8 collet set, face mills, vertical boring holder, boring bar set, end mill sets, clamps and jacks. It weighs 600 lbs. without the stand. May be able to arrange for forklift to load. Asking \$3500 for the lot.

Mike Phelan
925-376-3191
phelanfolks@comcast.net

--+--

BAEM member George Spain is offering for sale three different professional-level cylinder boring devices. All are used, but in good condition.

VAN NORMAN 777-6 Boring Bar.

Boring bar with stand and tool kit.
Price: \$ 1500

VAN NORMAN 944 Boring Bar.

Boring bar with stand and tools.
Seen elsewhere for \$ 2,200 – 4,800.
Price: \$ 1500

STRONG Boring Bar.

Boring bar, table model, with tools.
Bores 40mm to 70mm.
Seen elsewhere for \$ 1,600 – 2,750.
Price: \$ 1500

For further information, contact George Spain at
Phone: 707-342-2931
Email: geobev11@att.net

--+--

Dwight Giles has some stuff he is offering:

-1.5 hp electric motor. 1750 rpm. 110/220v
AC single phase. Heavy! Price: Free!

-Engine Mount Box. Beautiful wooden box for mounting your larger engine. Perfect for a Black Widow V8. 3 available. Price is \$200 donation to club.

Contact Dwight at jig313@aol.com
or phone: 707-648-1481

--+--

Got something you'd like to sell? Your ad is free and will be seen by likely customers.

NEWSLETTER CONTRIBUTIONS

Your contributions to this newsletter are appreciated: workshop reports, tech articles, reviews, historical pieces, whatever. You contribute, we'll figure out how to post it. Send your contributions to either or both of us.

Thanks!

-Mike Byrne at mgbyrne3@comcast.net

-Wes Wagnon at weswag@ix.netcom.com

